



# FLUO900LED – Life Science Fluorescence Microscope

Binocular / Trinocular

Download  
Catalogue



FLUO900-LED Series Fluorescence Microscope research grade most applied the field of medicine, clinical and biology research, pharmacology, . Equipped with universal infinity independent plan achromatic optical system, chromatic aberrations, and curvature of field are both ideally corrected over the field of view.

High eye point, Wide field of view eyepiece, and its diopter are adjustable. Standard 10X eyepieces view-field can choose between 20mm and 22mm. And high eye point eyepiece with the distance up to 21mm view-field can bring you wider vision and more comfortable feeling.

Optics System: Infinity Independent Plan Achromatic Optical System F=200mm Viewing Head : Siedentopf binocular tube, Interpupillary distance 52~75mm, 30°inclined, 360° rotatable, diopter adjustable.



## Upright Microscope



## Phase Contrast



## Nosepiece

Revolving and reversed nosepiece for 5 objectives



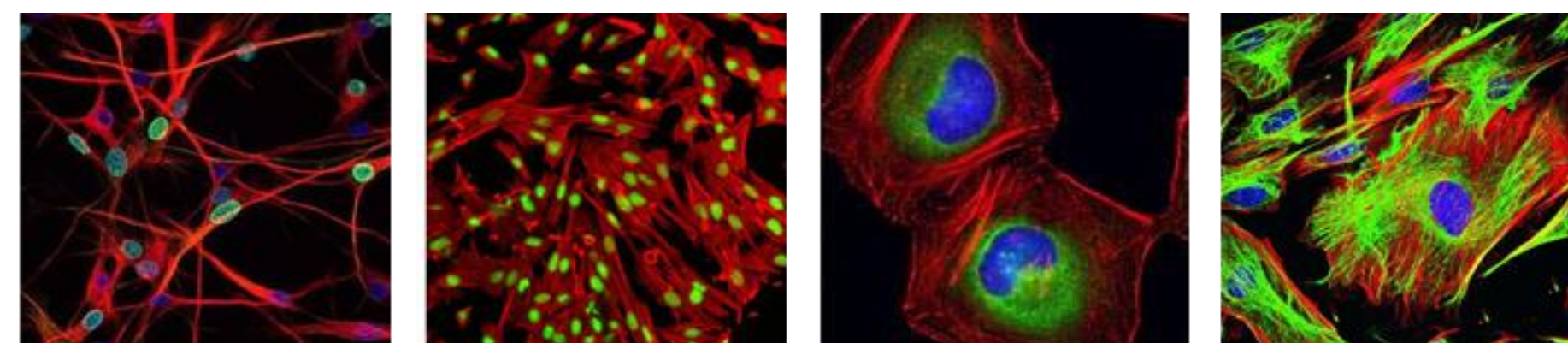
## Objectives

Infinity Plan Achromatic Objectives



## LED Light source

The innovative design offer larger apertures, allowing the optical system of the microscope to produce images at higher resolutions



## TECHNICAL SPECIFICATIONS FLUO900 / FLUO900-LED

### EYEPIECE(S)

- Extended EWF 10x/20 mm eyepieces, Ø 30 mm tubes.
- Eyepieces can be secured to the tubes

### HEADS

- Binocular Siedentopf type heads are with 30° inclined tubes, interpupillary distance from 52 to 75 mm and is equipped with diopter adjustment(s). (48-75 is Optional)
- The trinocular head comes with a Ø 30 mm photo port. An optional ergonomic titling head (0:100 50:50) are also available (Optional)

### NOSEPIECE

- Revolving and reversed nosepiece for 5 objectives (4 objectives is optional)

### OBJECTIVES – COLO Optical System

- All optics are anti-fungus treated and anti-reflection coated for maximum light throughput
- Infinity achromatic objectives 4x/0.13 10x/0.30 20x/0.40 S40x/0.70 S100x/1.25 oil (Optional)
- Infinity E-Plan objectives 4x/0.10 10x/0.25 20x/0.40 S40x/0.65 S100x/1.25 oil (Optional)
- Infinity plan objectives 4x/0.10 10x/0.25 S40x/0.65 S100x/1.25 oil (Standard) S60x/ 0.80 (Optional)

### STAGE

- 156 x 138 mm ceramic stage with integrated 76 x 54 mm mechanical stage protects with a very tough ceramic surface, against marks and scratches. The surface also ensures stray light not to be reflected from the stage into the objective (Optional)
- 185 x 177 mm reckless stage equipped with double slide holder and integrated 75 x 50 mm reckless mechanical stage. It has no protruding parts, enabling more smooth movements and is safer

### CONDENSER FOR DARK FIELD

- Dark field condenser (dry) usually for 40-600X magnification.
- Dark field condenser (oil), if you want to observe 600X and more, this condenser is necessary

### FOCUSING

- Coaxial coarse and fine adjustments, 100 graduations, 1µm per graduation, 100µm per rotation, total travel approximately 14 mm.
- Supplied with an adjustable rack stop to prevent damage to sample and objectives.
- The coarse adjustments are equipped with friction control

### EPI ILLUMINATION MERCURY/LED

- Epi-illumination 100 W mercury vapor lamp
- LED Light source, with wavelength controller
- The innovative design offer larger apertures, allowing the optical system of the microscope to produce images at higher resolutions, very close to the theoretical diffraction limit of the optics. Other benefits of the LED is the low energy consumption, no heating and a long operating lifetime. The illumination on models with IOS plan and plan phase infinity corrected system provides high contrast and a maximum achievable resolving power of the optics. Also available for other models as an option

### FILTERS

- B, G, R, UV and other fluorescence excitation, observed DAPI, FITC-, TRITC, Alexa Fluor series, Cy3 series of common fluorescent dyes in CTC Detection, FRET, cellular immunity and other fields are widely used.

### PACKAGING

- Supplied with power cord, dust cover, a spare fuse, user manual and 4 ml immersion oil for models with S100x objective.
- All packed in good quality foam and carton.

Model	FLUO900B	FLUO900LED
Kohler Illuminator (No field diaphragm)	○	○
Kohler Illuminator (With field diaphragm)	●	●
100W DC Mercury Lamp Light Box with lamp	●	○
100W DC Mercury Lamp Power Box	●	○
6V 20W Tungsten-Halogen Lamps	●	●
6V 30W Tungsten-Halogen Lamps	○	○
LED Source for fluorescence with controller	○	●
3W LED Electric Device	○	●
0.5X C-Mount	○	○
1X C-Mount	○	○
0,65X C-Mount	○	○
Adapter for Nikon DSLR	○	○
Adapter for Cannon DSLR	○	○
Protection against unauthorized eyepiece and lens disassembly	○	○
Blue Filter (φ32)	●	●
Green Filter (φ32)	○	○
Yellow Filter (φ32)	○	○
Ground Glass (φ32)	○	○
250V/3.15A Φ5X20 fuse	●	●
6V 30W Tungsten-Halogen lamp	○	○
6V 20W Tungsten-Halogen lamp	●	●
3W Led Lamp	○	○
Immersion Oil	●	●
Dust Cover	●	●
φ2mm Allen screwdriver	●	●
Instruction manual	●	●
Power Cord	●	●

Please note

If this Microscope does not match the specific needs of your application, or some options are not listed for sale, please feel free to contact us. Our manufacturing engineers will come up with technical solutions to meet your needs. We reserve the right to change technical specifications at any time.